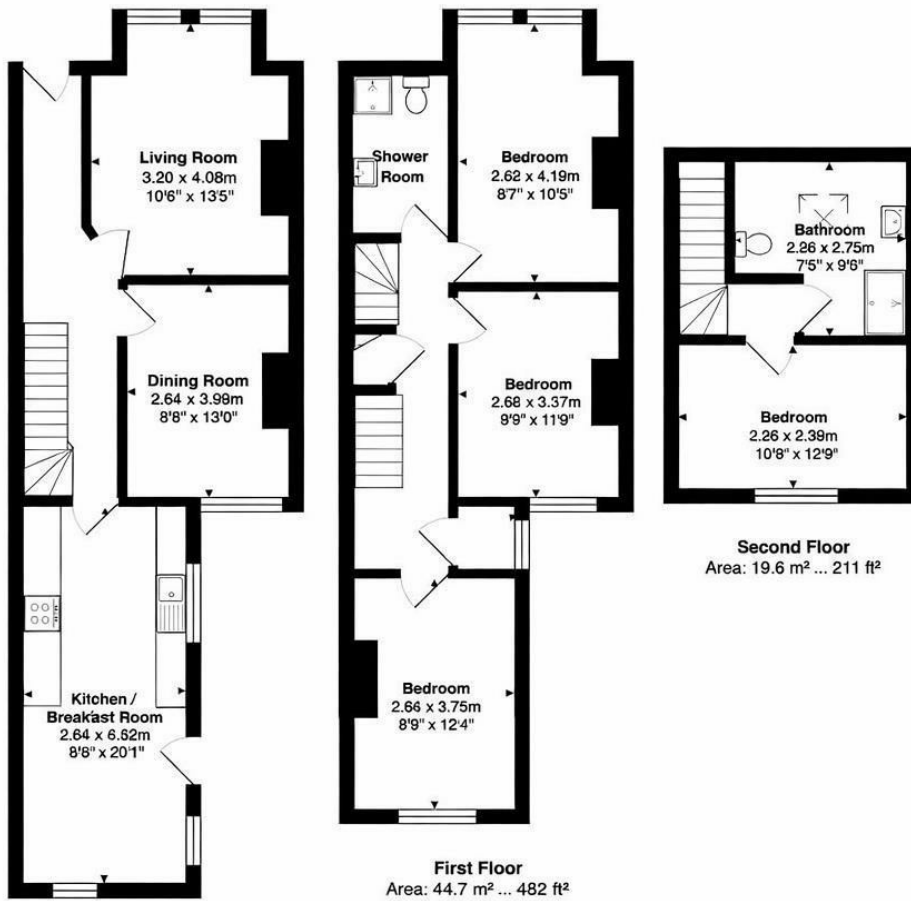




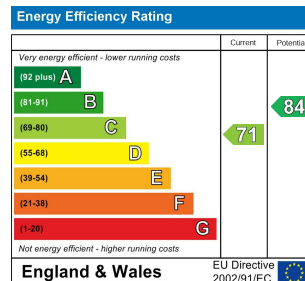
**4 Bed  
House - Terraced  
located in Brighton**

**£475,000**





Total Area: 112.2 m<sup>2</sup> – 1208 ft<sup>2</sup>



DIRECTIONS

CONTACT

Kendrick Property Services - Brighton  
10-12 Lewes Road  
Brighton  
East Sussex  
BN2 3HP

E: [lettings@kendrickpropertyservices.co.uk](mailto:lettings@kendrickpropertyservices.co.uk)  
T: 01273 699600  
[www.kendrickpropertyservices.co.uk](http://www.kendrickpropertyservices.co.uk)

